

## Apartment 2

Ground Floor

1 Bedroom

Rooms

Metric

Imperial

**Kitchen**

1.81 x 3.44

5'11" x 11'4"

**Living**

4.58 x 2.72

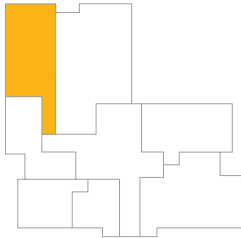
15'0" x 8'11"

**Bedroom**

3.39 x 2.94

11'1" x 9'8"

### Location



northlodgeyork.co.uk



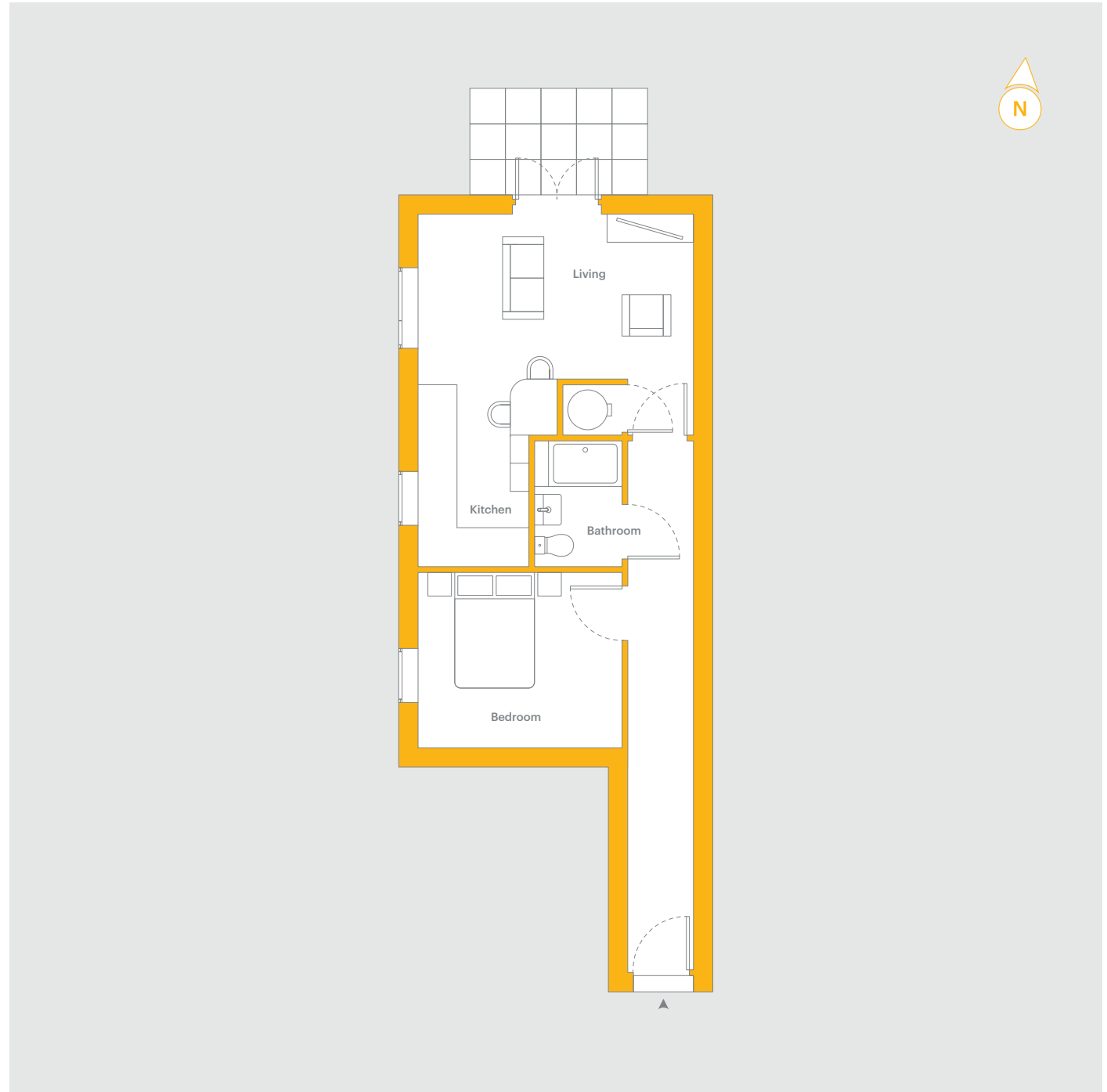
01904 617 832



01904 650 650

### Important Information

As part of their policy of continuous product development Purey Cust (York) Estate Limited reserves the right to make alterations, amendments or additions to the development or any part of it without prior notice. The plans and dimensions therefore are subject to change and intended for guidance only. All dimensions shown are maximum sizes.



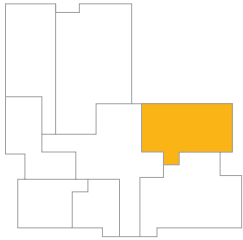
## Apartment 4

Ground Floor

1 Bedroom

Rooms	Metric	Imperial
<b>Kitchen</b>	1.88 x 2.44	6'2" x 8'0"
<b>Living</b>	3.32 x 4.58	10'11" x 15'0"
<b>Bedroom</b>	3.27 x 2.44	10'9" x 8'0"

### Location



northlodgeyork.co.uk



01904 617 832



01904 650 650

#### Important Information

As part of their policy of continuous product development Purey Cust (York) Estate Limited reserves the right to make alterations, amendments or additions to the development or any part of it without prior notice. The plans and dimensions therefore are subject to change and intended for guidance only. All dimensions shown are maximum sizes.

## Apartment 6

First Floor

1 Bedroom

Rooms

Metric

Imperial

**Kitchen**

1.88 x 2.44

6'2" x 8'0"

**Living**

3.30 x 4.58

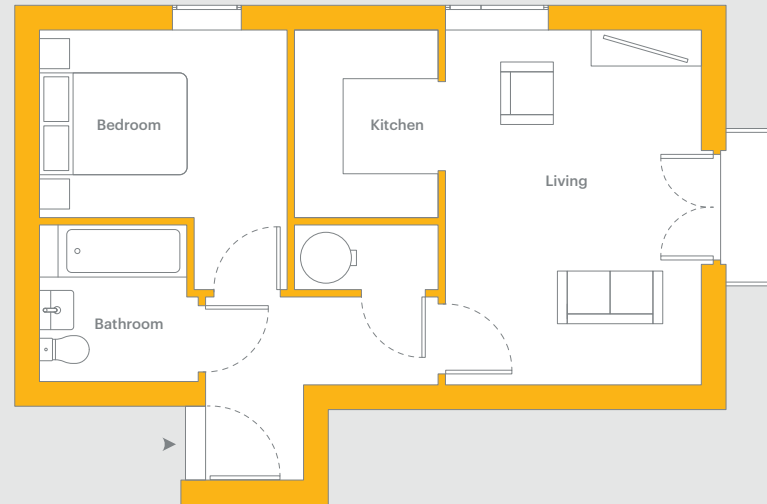
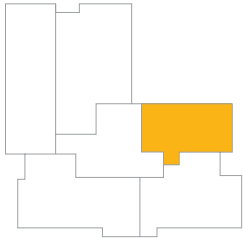
10'10" x 15'0"

**Bedroom**

3.27 x 2.44

10'9" x 8'0"

### Location



northlodgeyork.co.uk



01904 617 832



01904 650 650

#### Important Information

As part of their policy of continuous product development Purey Cust (York) Estate Limited reserves the right to make alterations, amendments or additions to the development or any part of it without prior notice. The plans and dimensions therefore are subject to change and intended for guidance only. All dimensions shown are maximum sizes.